

STAR WARS LEGION™

READ THIS FIRST

Be sure to use a pair of sharp hobby clippers to remove the miniature components from the frame. Carefully clean the excess material and mold lines with a sharp hobby knife. Check the fit of each part before gluing. Use a small amount of hobby plastic glue to assemble the components. Use caution with all products and follow all manufacturer instructions. Adult supervision is recommended for children under the age of 16. Have fun!

JOIN THE COMMUNITY

Use #MyStarWarsLegion to share your miniature photos and be a part of the *Star Wars: Legion* community!



AtomicMassGames



AtomicMassGames

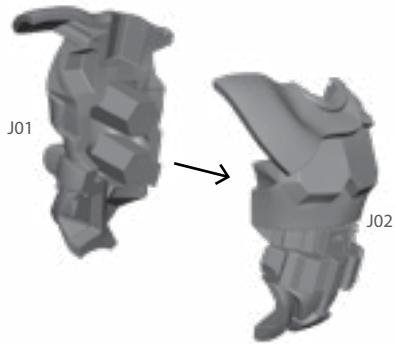


Atomic_Mass_Transmissions

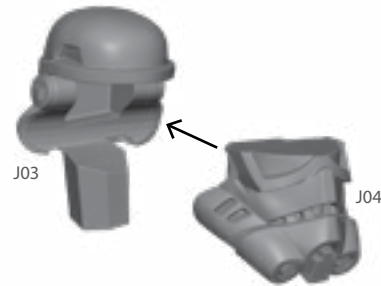
STORMTROOPER MARKSMAN

SWL134 ASSEMBLY (J)

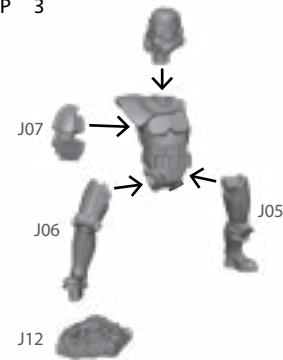
STEP 1



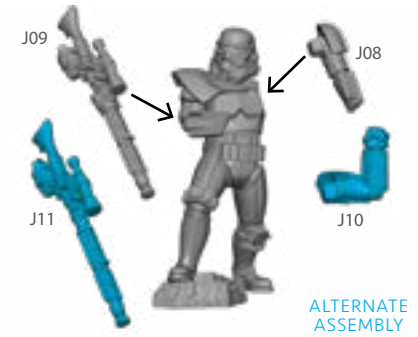
STEP 2



STEP 3



STEP 4



FINAL



STORMTROOPER

SWL134 ASSEMBLY (K)

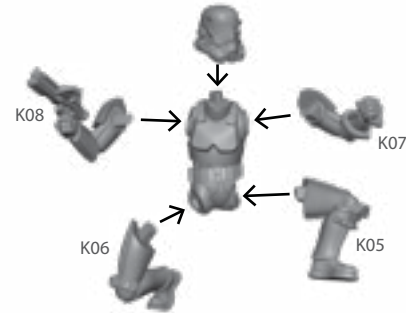
STEP 1



STEP 2



STEP 3



STEP 4



FINAL



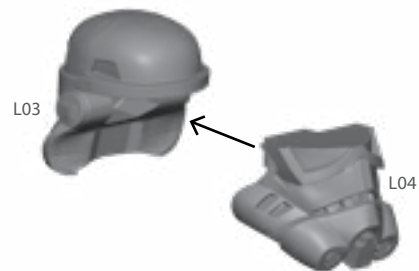
STORMTROOPER LEADER

SWL134 ASSEMBLY (L)

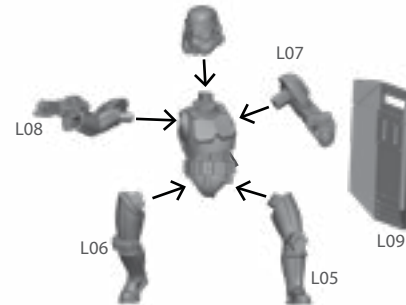
STEP 1



STEP 2



STEP 3

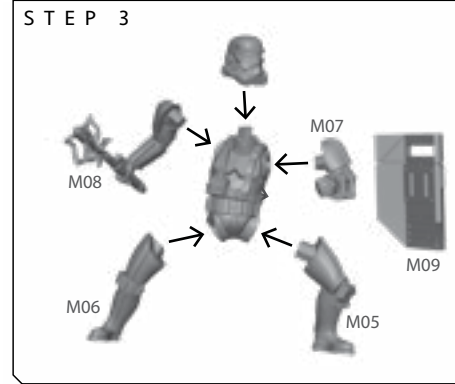
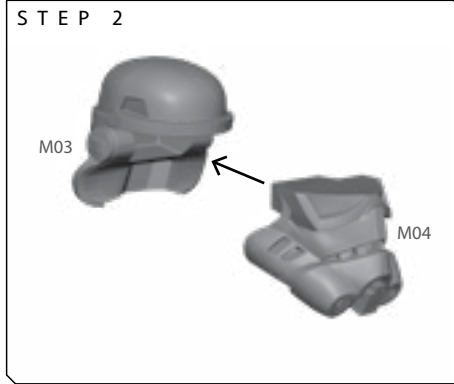
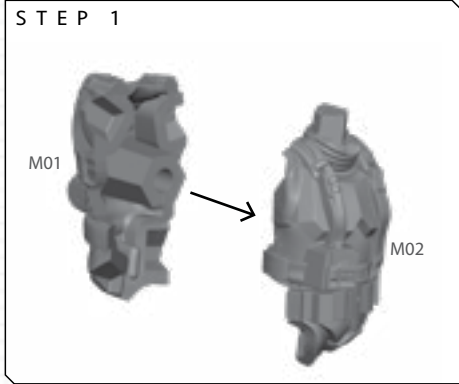


FINAL



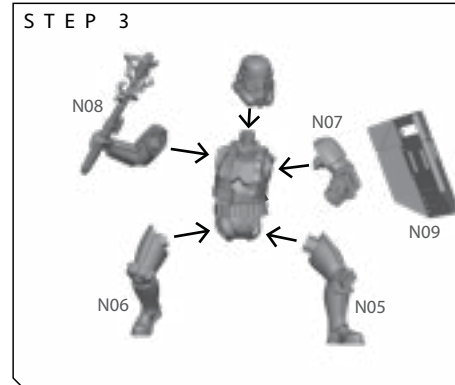
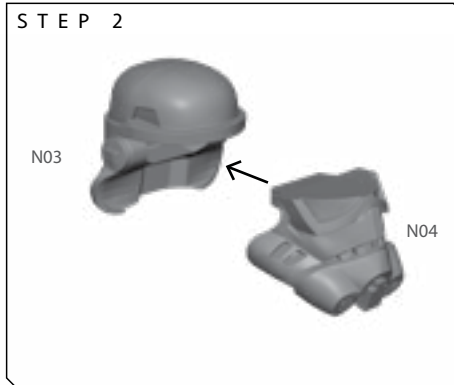
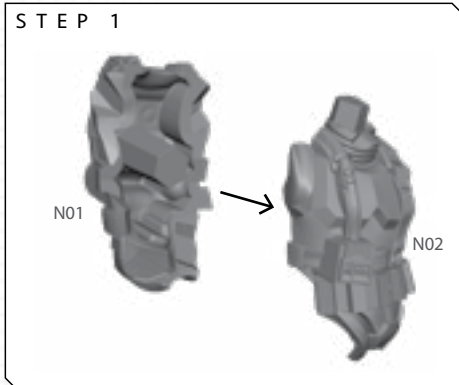
STORMTROOPER

SWL134 ASSEMBLY (M)



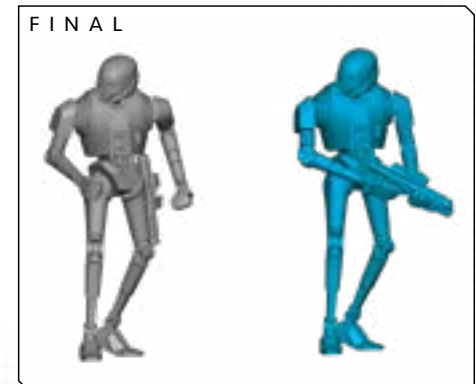
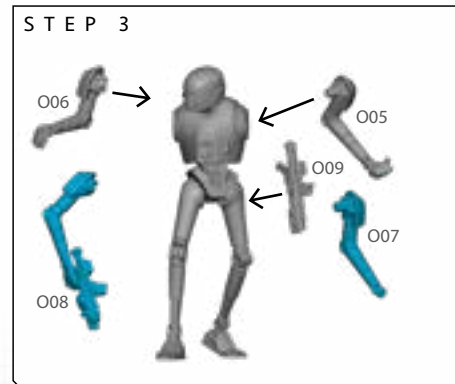
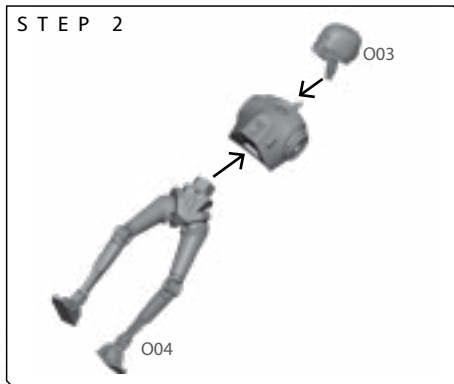
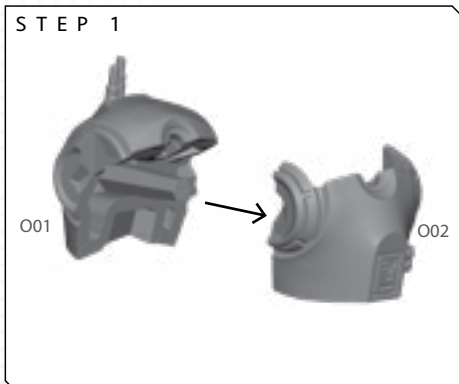
STORMTROOPER

SWL134 ASSEMBLY (N)



KX DROID

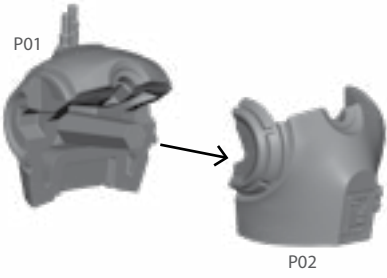
SWL134 ASSEMBLY (O)



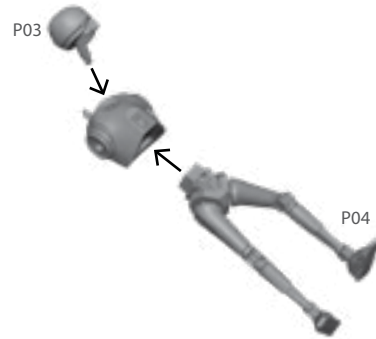
KX DROID

SWL134 ASSEMBLY (P)

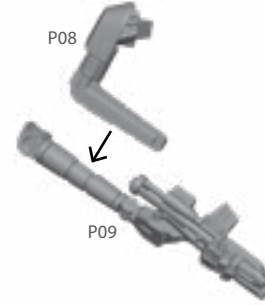
STEP 1



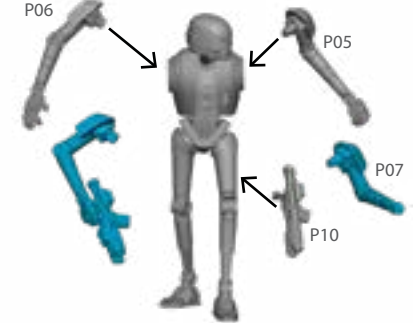
STEP 2



STEP 3



STEP 4



FINAL

